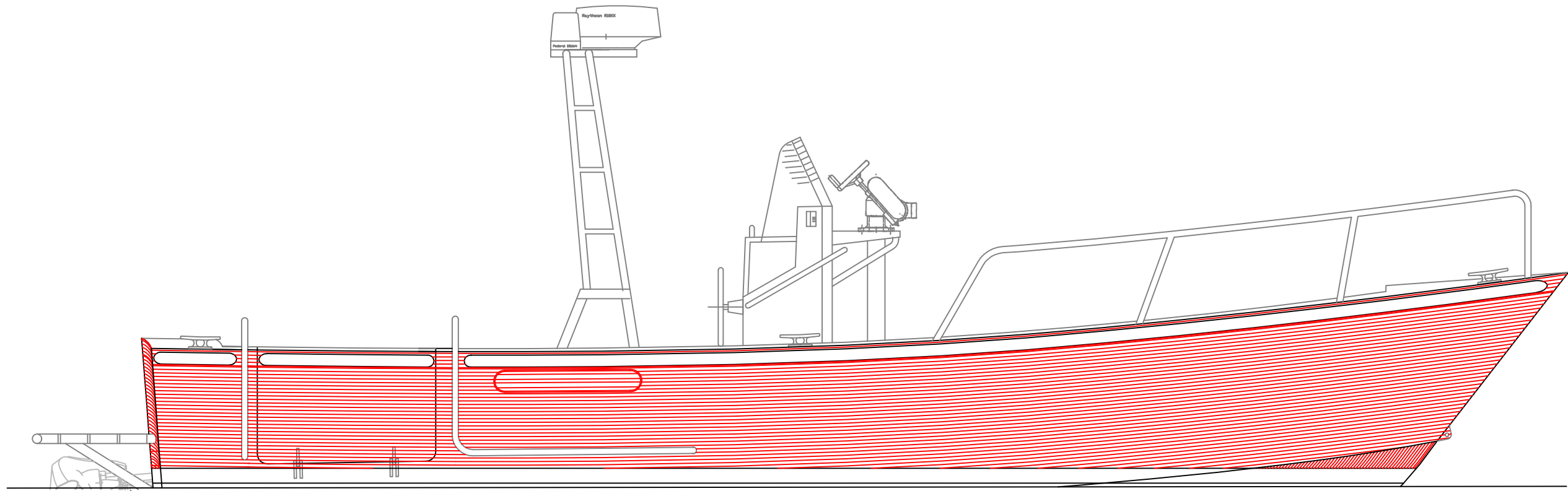
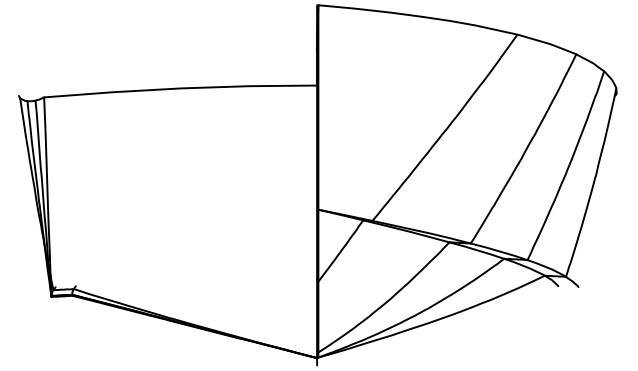
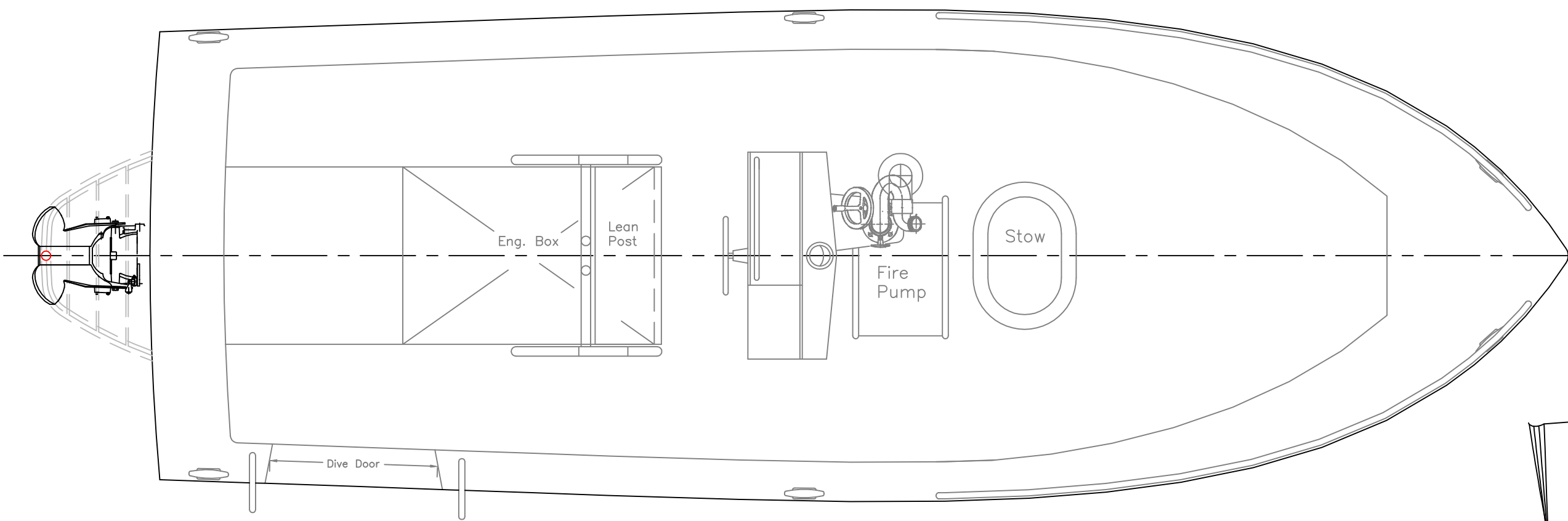



LOA: 24'-0"  
 Hull Beam: 8'-4"  
 LWL: 20'-8"  
 Draft: 1'-4"  
 Displacement: 6,200 lbs  
 (normal operating)



OUTBOARD VIEWS

24' x 8' 4" JET FIRE/ RESCUE BOAT		
For: Newburyport Fire Dept.		
SCALE 1/2" = 1'	DES/DWN WAL	DATE 6-2-98
	REV	SHEET
 Winninghoff Boats, Inc. Warehouse Lane, Rowley, MA 01969		DWG NO. 1660B