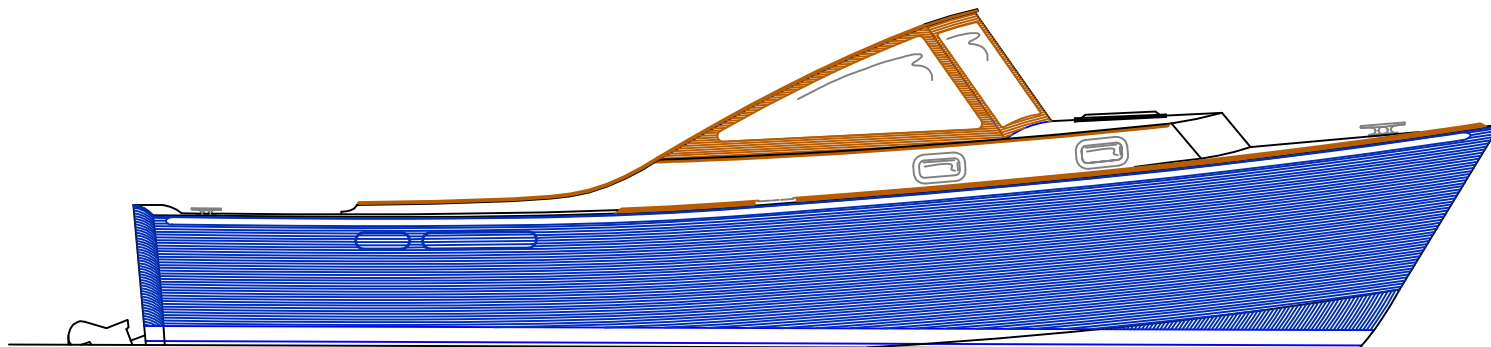
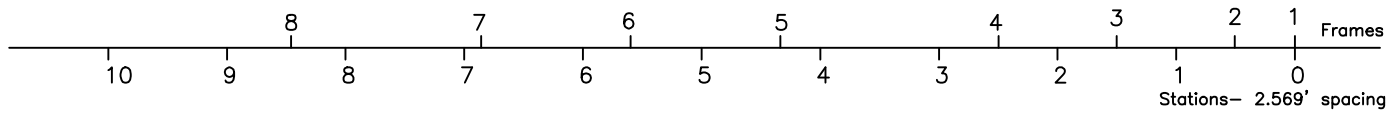



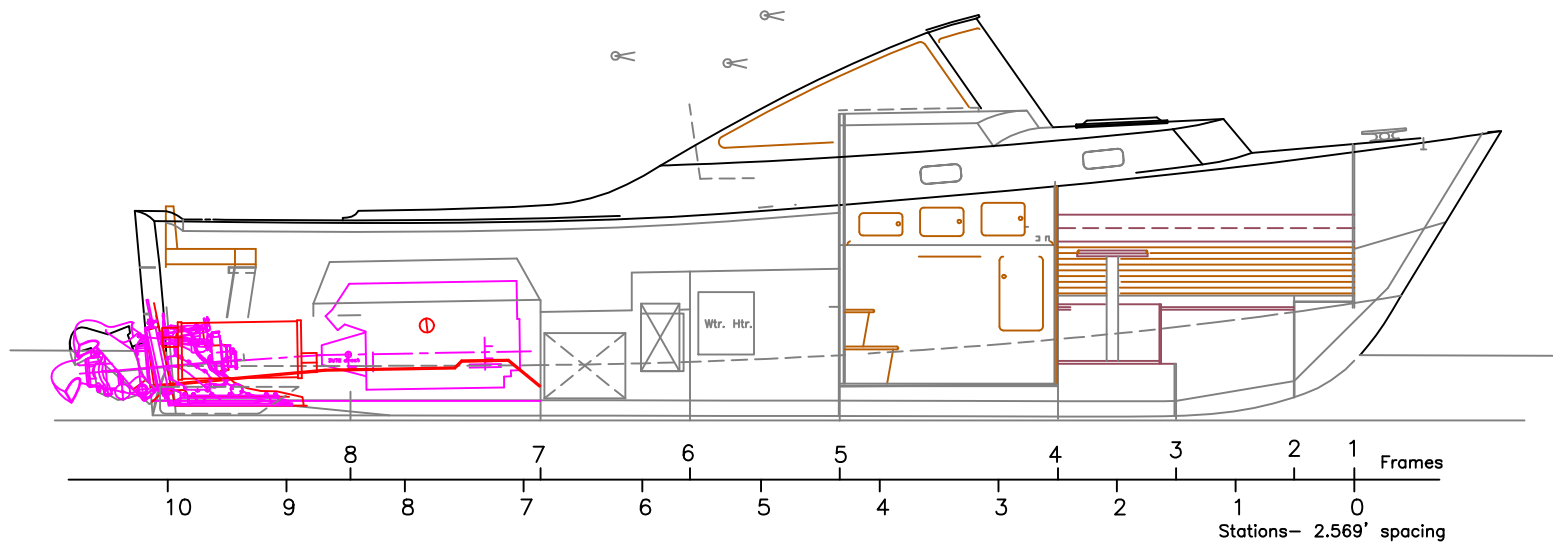
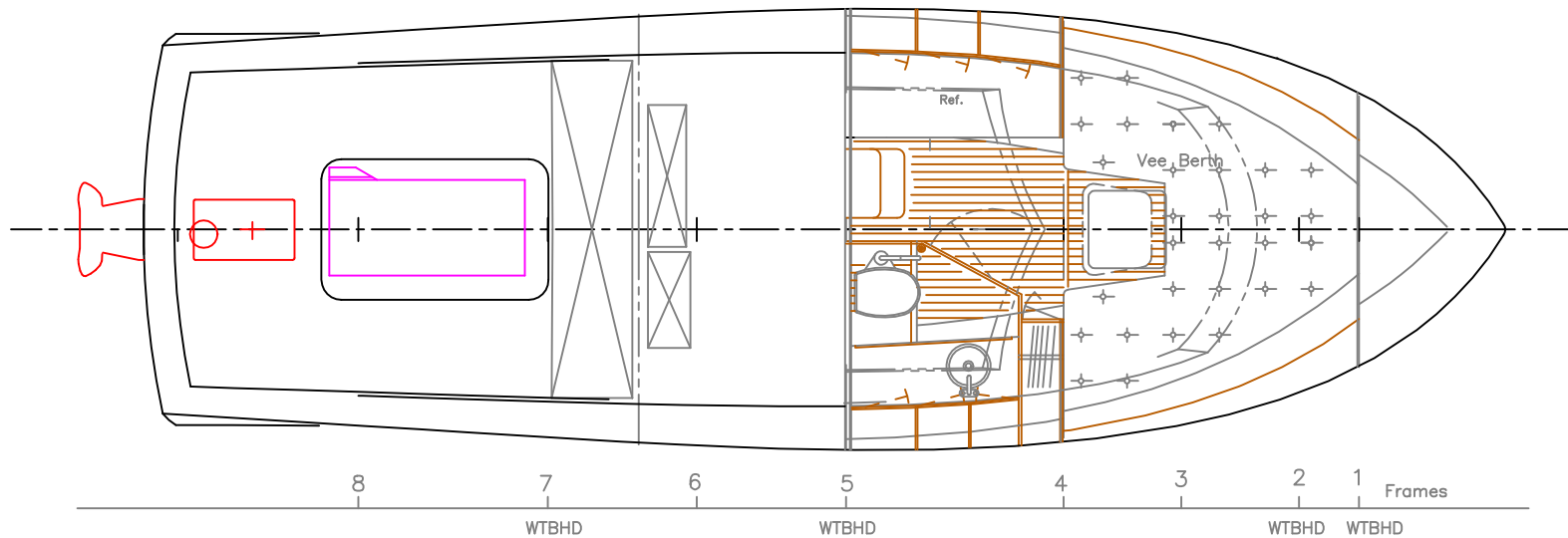
Particulars-	
LOA (hull)	- 29'-7 1/2" (9 meters)
LWL	- 26'-5"
Beam (hull)	- 9'-7"
Draft	- 1'-5"
Displacement	- 9,300 lbs (normal operating)



WL at 8,500,15.24'



OUTBOARD PLAN & PROFILE			
Hawthorne Cove Series- 9m			
SCALE	DWG./JOB#	DATE	
3/8"=1'	WBH+CM/WAL	1-30-98	
	REV	SHEET	
	5-5-98		
 Winn-Dixie Boats, Inc. Warehouse Lane, Beverly, MA 01908			DWG NO. 1617B



INBOARD PLAN & PROFILE			
Hawthorne Cove Series- 9m			
SCALE	DWG./DATE	DATE	
3/8"=1'	WBL/HCM/WAL	1-30-98	
	REV	5-5-98	SHEET
Winninghoff Boats, Inc. Warehouses Lane, Rowley, MA 01888			DWG NO. 16188